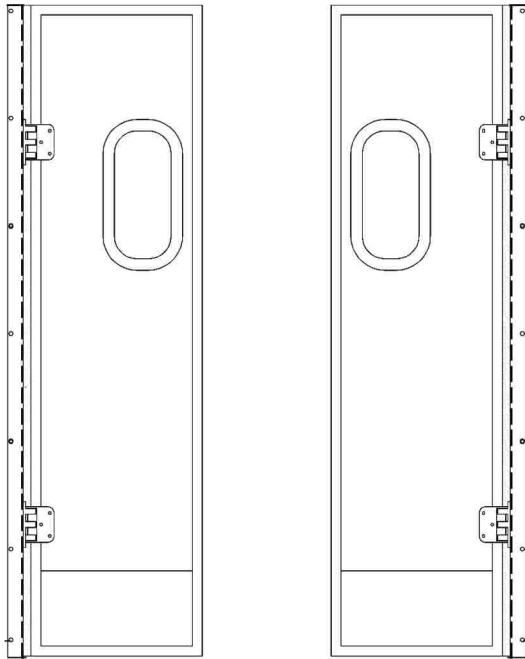


ASSEMBLY INSTRUCTIONS

UPPER CROSS MEMBER

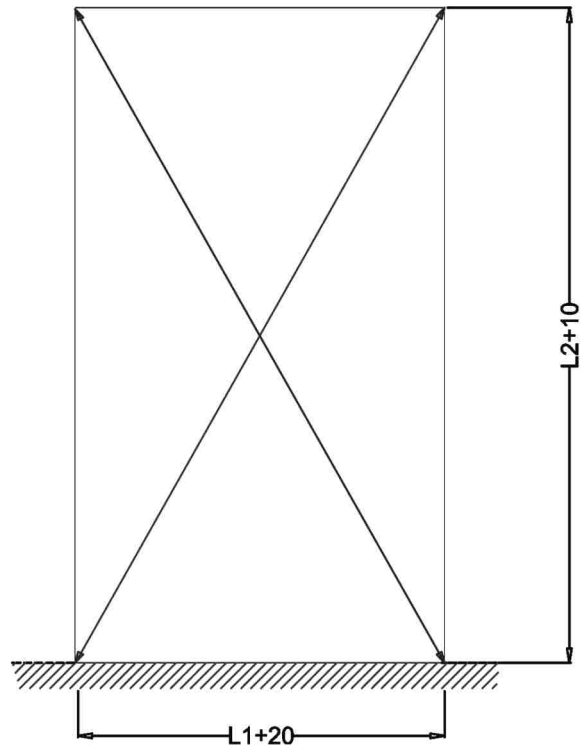


STEP 1



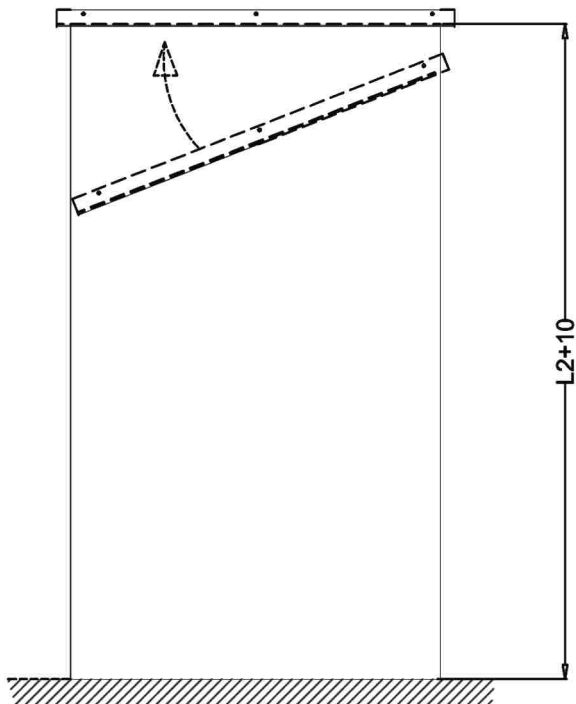
Left wing with stainless steel U section

Right wing with stainless steel U section



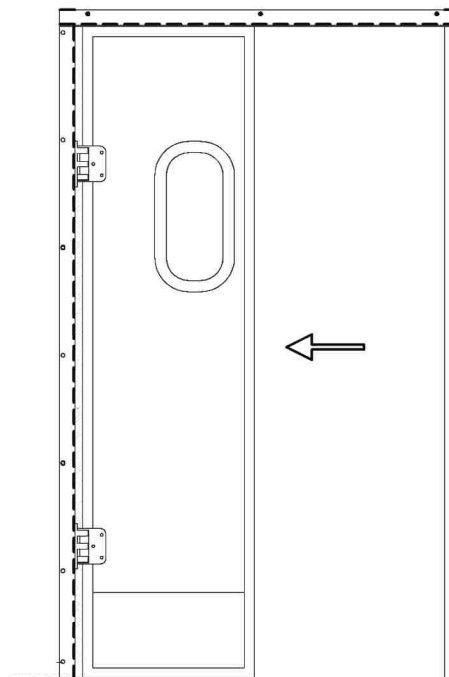
1. Cut door case ($L1+20/L2+10$)
2. Check diagonals

STEP 2



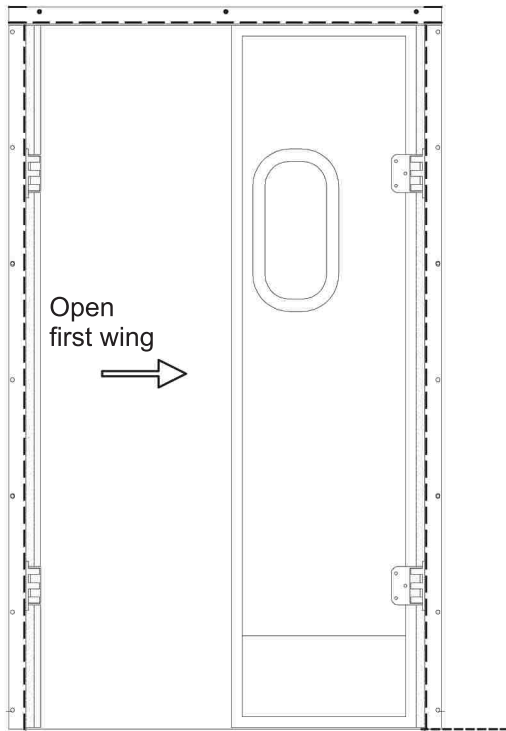
Assemble upper cross member
Insert stainless steel U section on panel

STEP 3



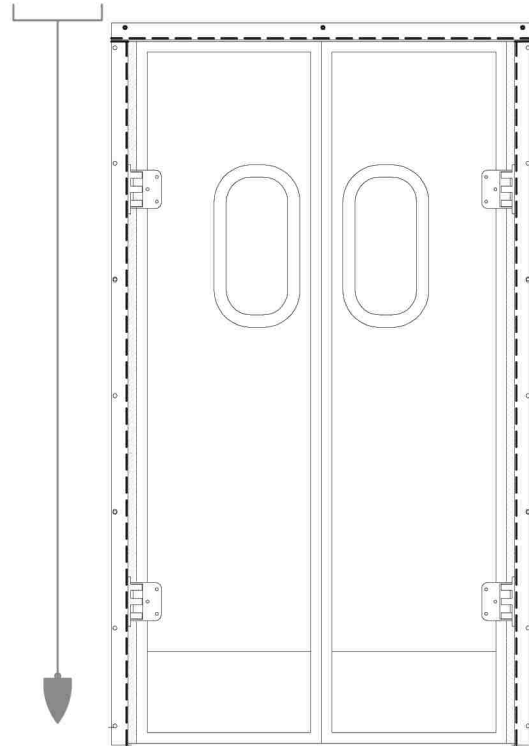
Assemble first wing
Insert stainless steel U section on panel

STEP 4

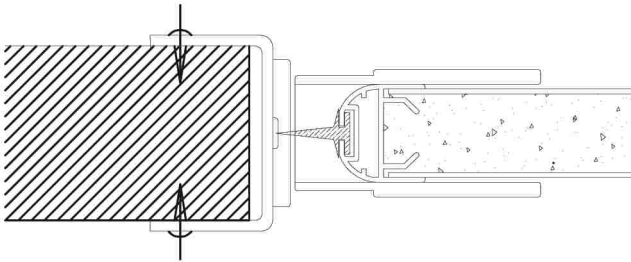


- Assemble second wing
- Insert stainless steel U section on panel

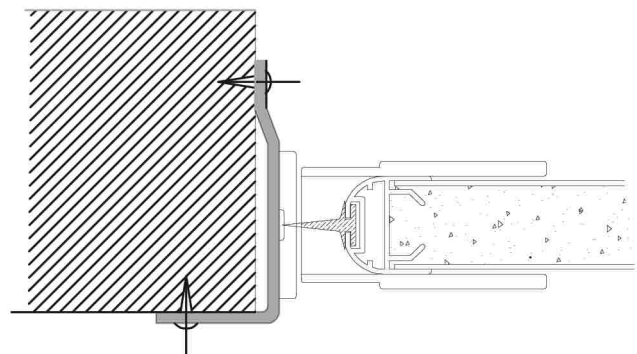
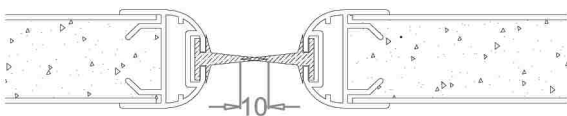
STEP 5



- Align the jambs of the two wings vertically
- Central gaskets must overlay by 10 mm
- Align upper cross member horizontally
- Fix stainless steel U section with screws or rivets



Fix with rivets or screws



Secure on wall with dowels