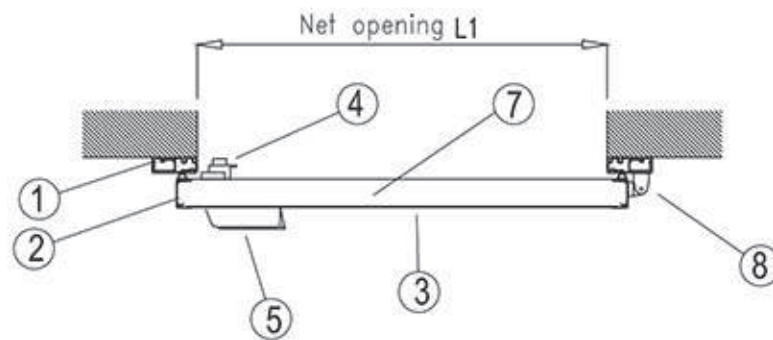
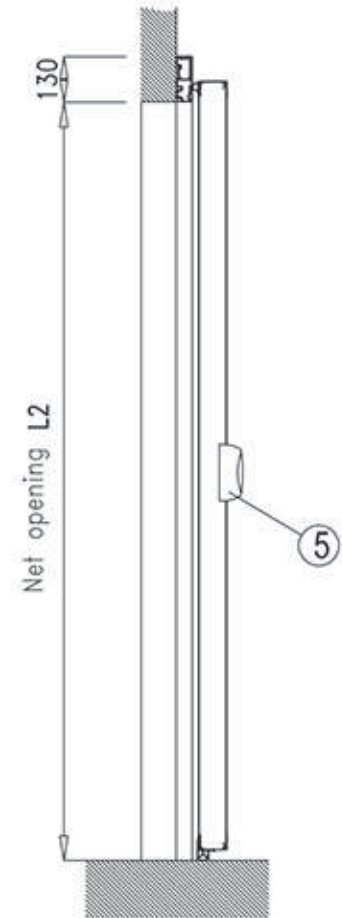
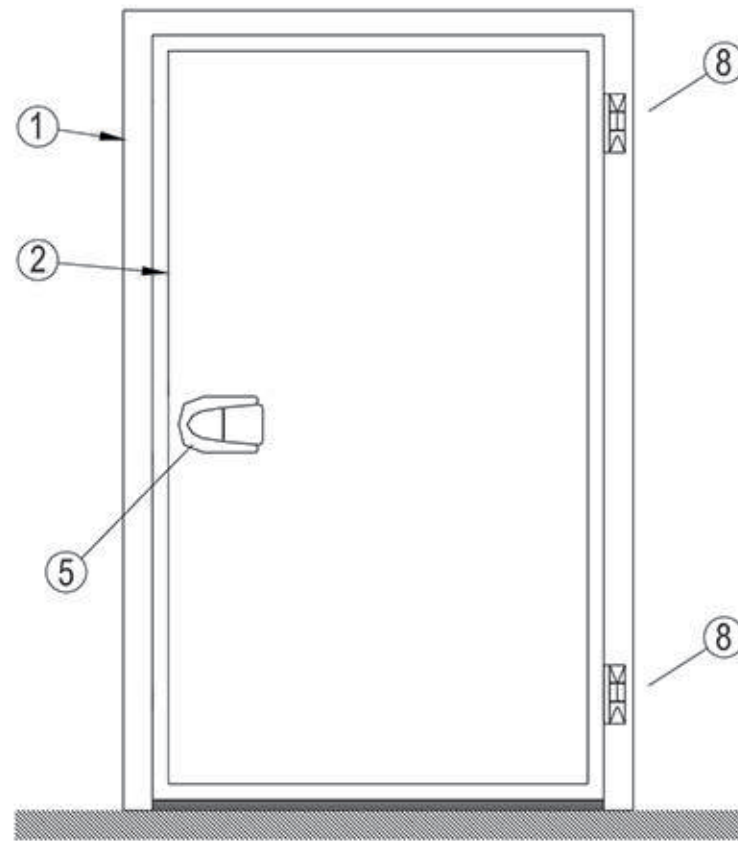
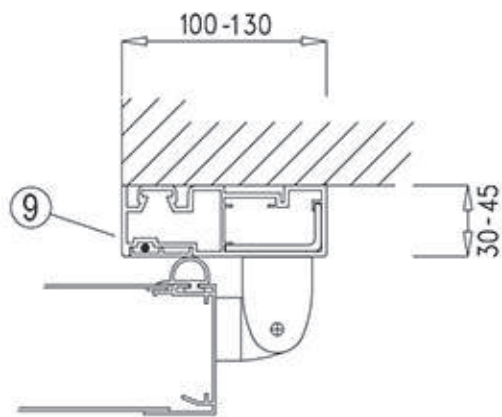
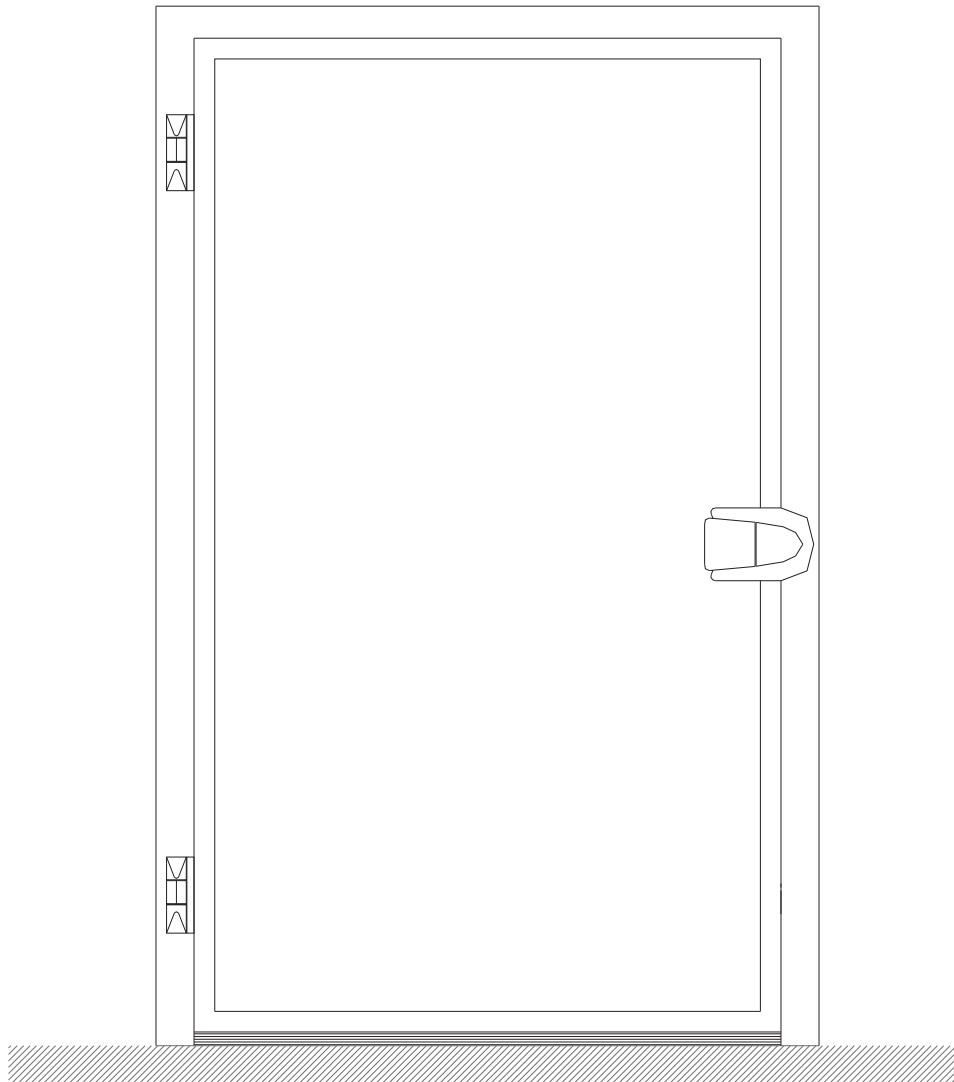


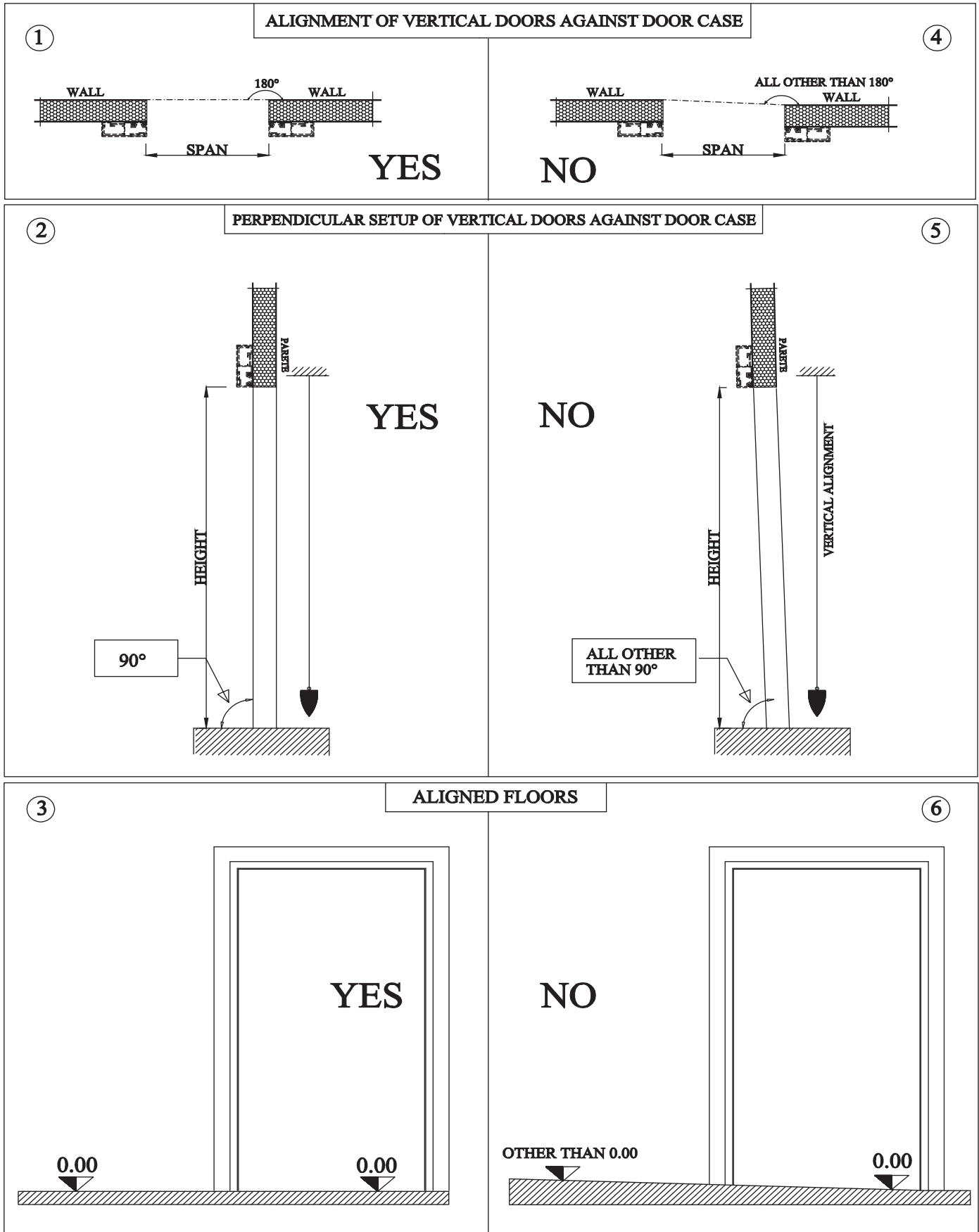
- ① PVC FRONTAL FRAME
- ② ALUMINUM OR STAINLESS STEEL BORDER LEAF
- ③ FIBERGLASS, PREPAINTED METAL OR S/S FACING
- ④ SAFETY INSIDE HANDLE
- ⑤ OUTSIDE HANDLE WITH KEY
- ⑥ RUBBER SEALING GASKETS
- ⑦ INSULATED DOOR LEAF
- ⑧ HINGES
- ⑨ HEATER INSIDE THE MODEL BT





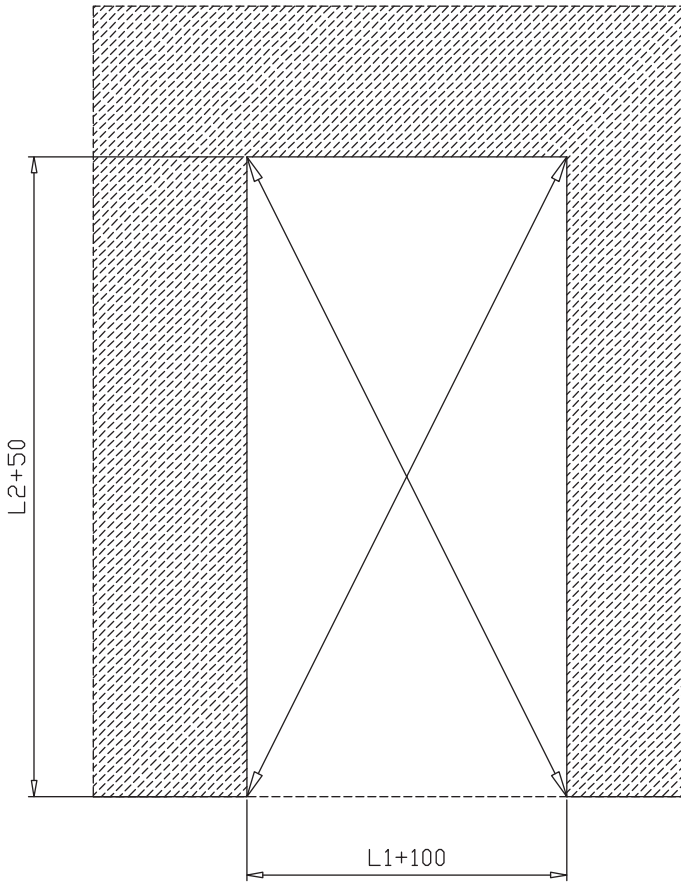
ASSEMBLY INSTRUCTION

CONDITIONS FOR CORRECT ASSEMBLY OF THE HINGED DOORS



FRIGO DOORS CANNOT BE HELD LIABLE FOR ANY DOOR MALFUNCTIONING IF TECHNICAL CONDITIONS OF ITEMS 1-2-3- ARE NOT COMPLIED WITH.

STEP 1 - CONSTRUCTION OF DOORS CASE



ON PANEL (WITH PSP)

- 1 - CUT PANEL (fig. 1)
WIDTH = $L1+100$
HEIGHT = $L2+50$

- 2 - CHECK DIAGONALS

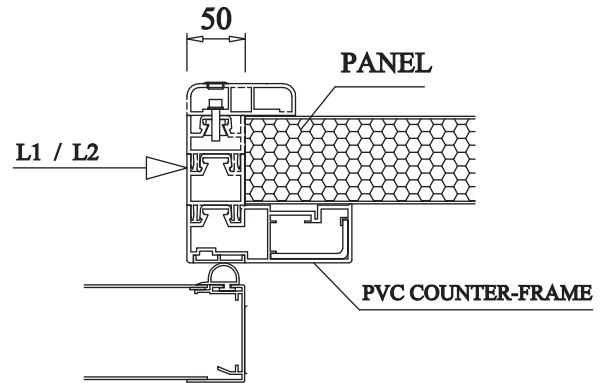
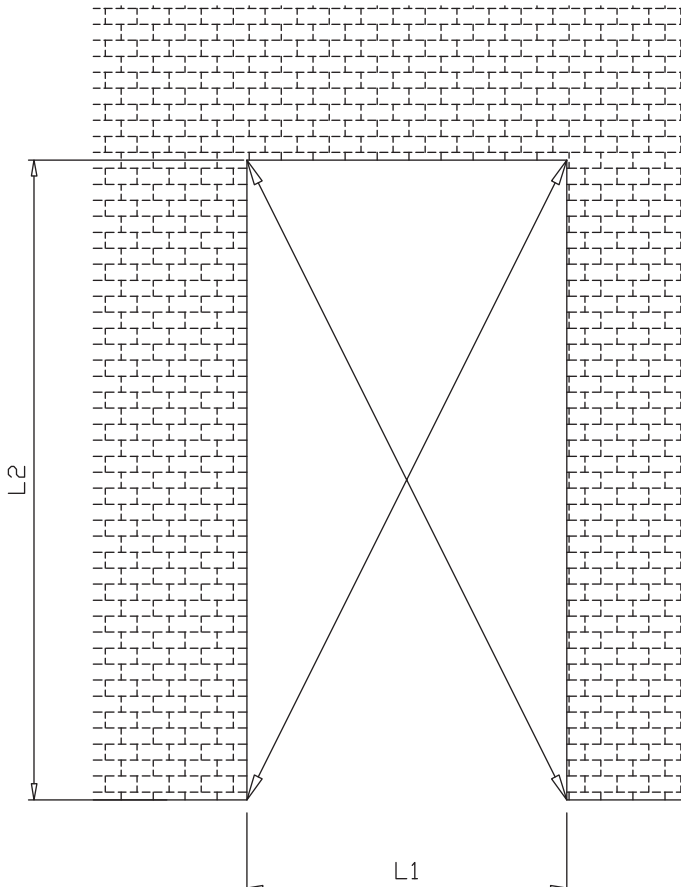


Figure 1



ON PANNEL (without PSP)

ON WALL (without PSP)

- 1 - cut panel/wall (fig.2)
WIDTH = $L1$ AS NET SPAN
HEIGHT = $L2$ AS NET SPAN

- 2 - CHECK DIAGONALS

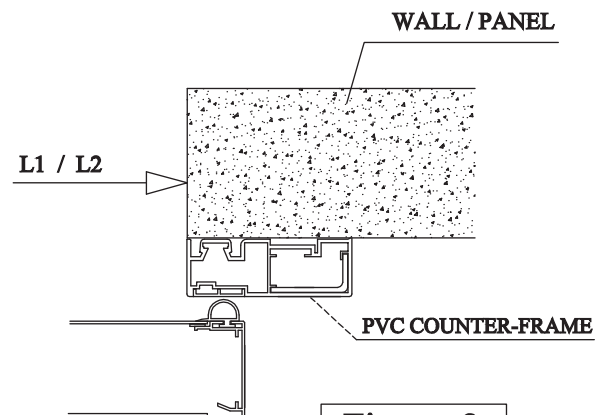
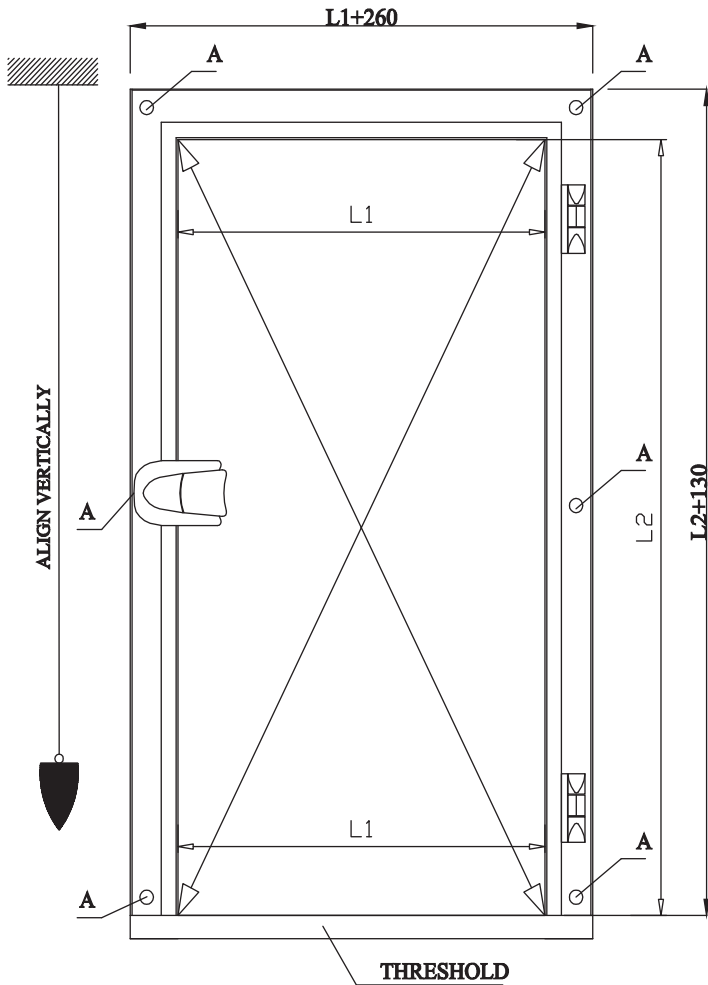


Figure 2

STEP 2 - ASSEMBLY OF COURTER-FRAME ON PANEL (WITHOUT PSP)



- 1 - UNPACK PVC FRAME
- 2 - APPLY SEALANT OR GASKET INSIDE FRAME (SEAL M)
- 3 - LEAN FRAME TO WALL NEXT TO HOLE
- 4 - ALIGN FRAME JAMBS VERTICALLY
- 5 - CHECK DIAGONALS
- 6 - SECURE FRAME TO PANEL WITH THE RODS (A)
- 7 - SEAL PERIMETER BETWEEN FRAME AND PANEL WITH POLYURETHANE FOAM (FIG. 3)
- 8 - ASSEMBLE CONNECTING SHEETS (IF ANY)

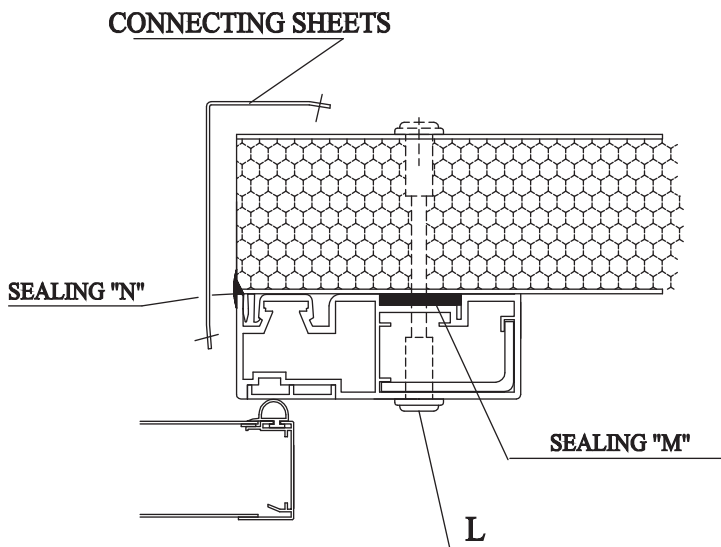


Figure 3

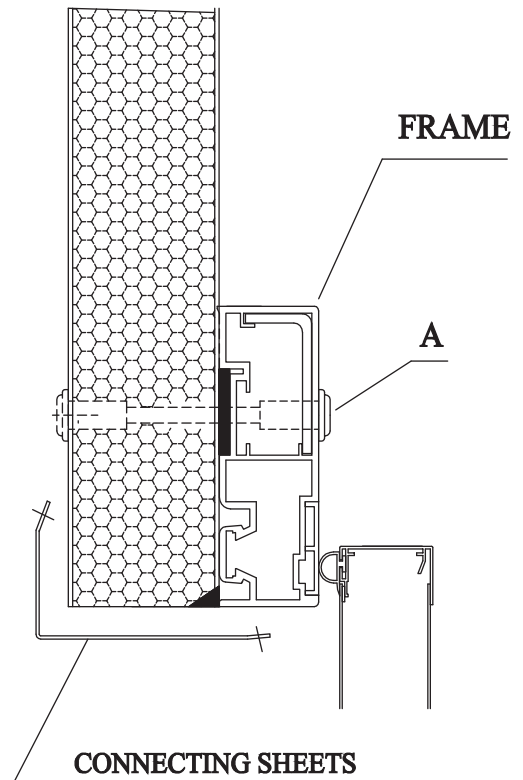
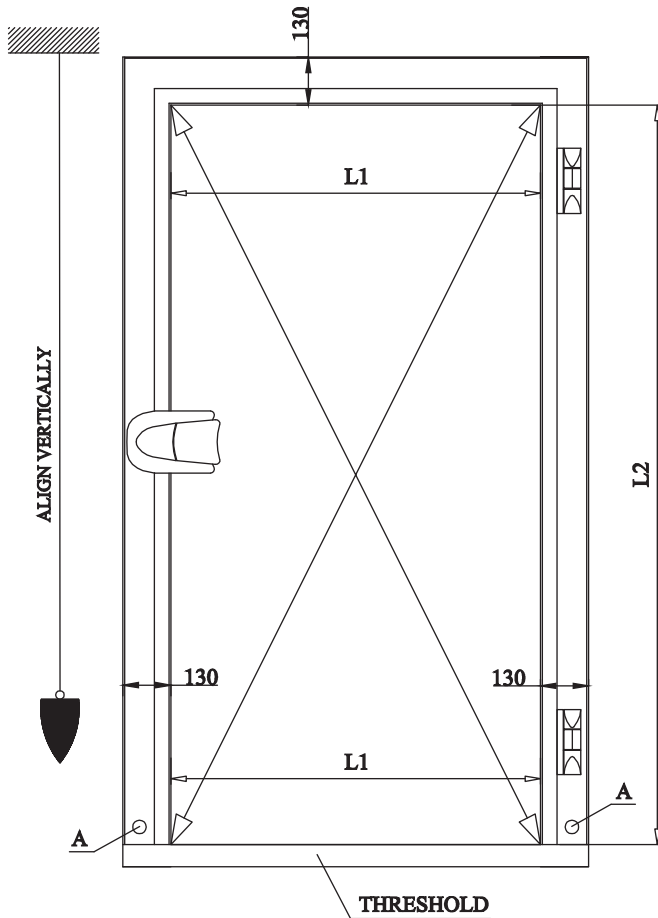
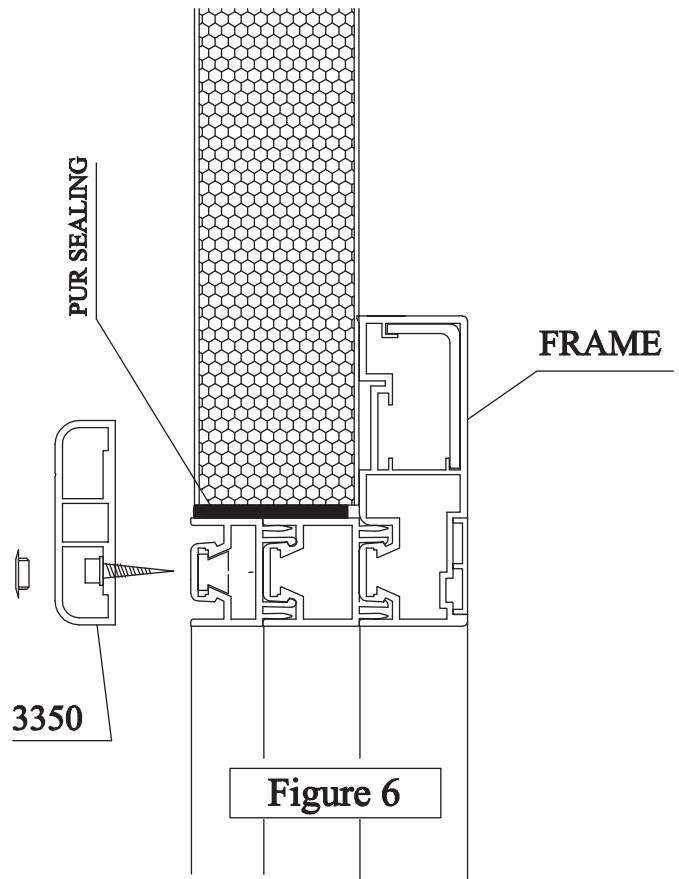
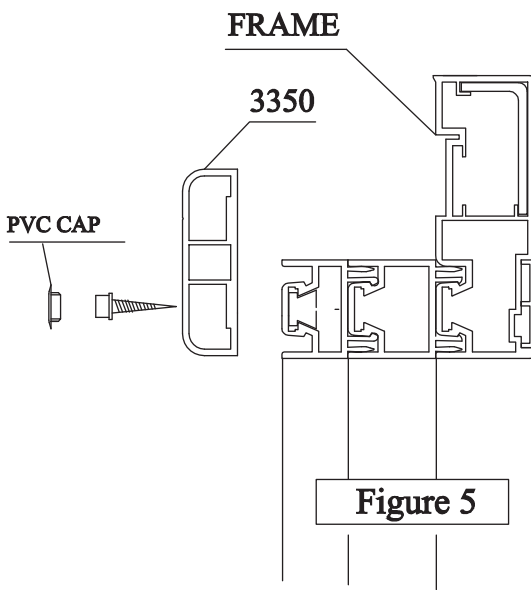


Figure 4

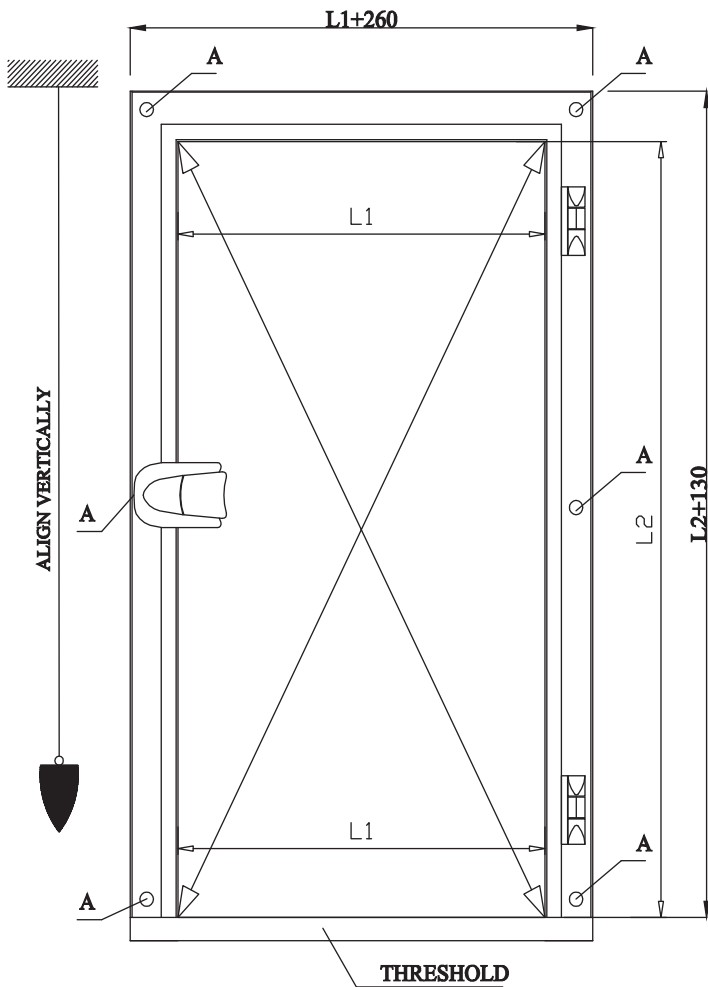
STEP 2 - ASSEMBLY OF COURTER-FRAME ON WALL OR PANEL (WITH PSP)



- 1 - UNPACK PVC FRAME
- 2 - UNSCREW COUNTER-FRAME COD. 3350 FROM FRAME (fig.5)
- 3 - INSERT FRAME INSIDE PANEL CUT
- 4 - ALIGN FRAME JAMBS VERTICALLY
- 5 - CHECK DIAGONALS
- 6 - SECURE FRAME TO PANEL WITH THE RODS (A)
- 7 - FOR FRAME WITHOUT A THRESHOLD, INSERT TWO RODS (A) THROUGH HOLES ON BOTTOM OF JAMBS AND SECURE TO PANEL .
- 8 - SEAL PERIMETER BETWEEN FRAME AND PANEL WITH POLYURETHANE FOAM (FIG. 6)
- 9 - SCREW COUNTER-FRAME CODE 3350 TO FRAME (FIG.5)



STEP 2 - ASSEMBLY OF COURTER-FRAME ON WALL (WITHOUT PSP)



- 1 - UNPACK PVC FRAME
- 2 - APPLY SEALANT OR GASKET INSIDE FRAME (SEAL M)
- 3 - LEAN FRAME TO WALL NEXT TO HOLE
- 4 - ALIGN FRAME JAMBS VERTICALLY
- 5 - CHECK DIAGONALS
- 6 - SECURE FRAME TO WALL WITH THE FASTNERS (A)
- 7 - SEAL PERIMETER BETWEEN FRAME AND WALL WITH POLYURETHANE FOAM (FIG. 3)
- 8 - ASSEMBLE CONNECTING SHEETS (IF ANY)

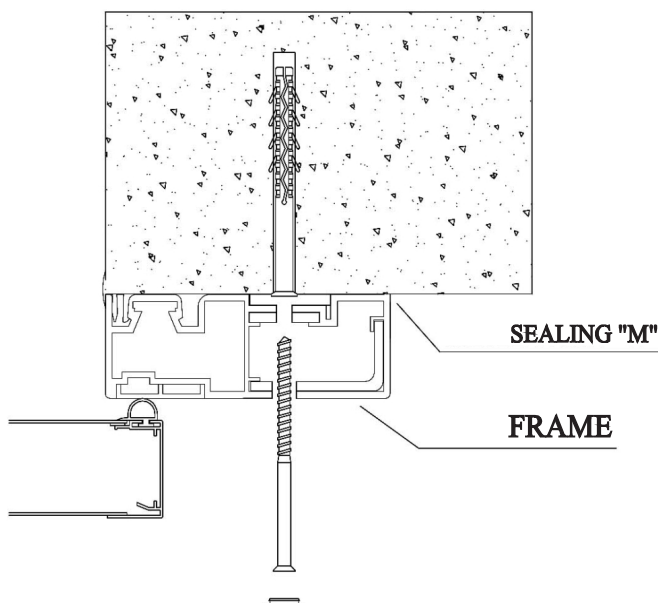


Figure 3

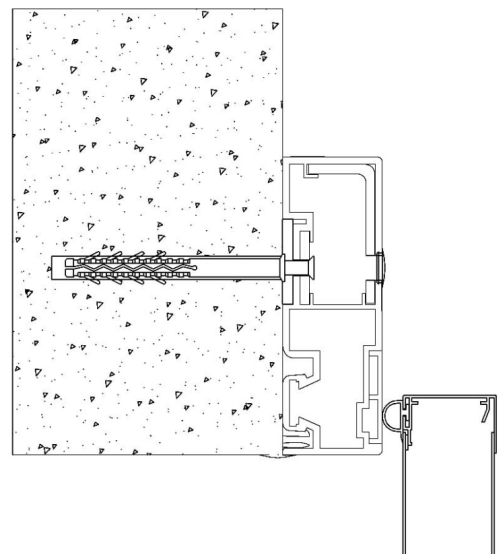


Figure 4